

# Argos3D-P23X

---

## Quick Start Guide

Version 2

BECOM Systems GmbH  
Gutheil-Schoder-Gasse 17  
1230 Wien  
AUSTRIA

[office.systems@becom-group.com](mailto:office.systems@becom-group.com)

<http://systems.becom-group.com>

**Argos3D-P23X** – Quick Start Guide

Document No.: 900-308 / A

Publication date: January 30, 2019

Subject to change without notice. Errors excepted.

This document is protected by copyright. All rights reserved. No part of this document may be reproduced or transmitted for any purpose in any form or by any means, electronically or mechanically, without expressly written permission by BECOM Systems.

Windows is a registered trademark of Microsoft.

## Table of Contents

1	Unboxing.....	5
1.1	In the box.....	5
1.2	Connecting your Argos3D-P23x.....	5
1.3	Connector Overview.....	5
1.3.1	Connecting the break-out board.....	6
1.3.2	Connecting the power supply.....	6
1.3.3	Connecting the Ethernet Cable.....	7
2	Downloading the Evaluation Software.....	8
2.1	Support website.....	8
2.2	Start-up screen.....	9
2.3	Prepare your Network Interface Card (NIC).....	10
3	Start using your Argos3D-P23x with 'BltTofSuite'.....	11
4	System Requirements & Support.....	12
4.1	Support.....	12
5	Product History.....	13
5.1	Argos3D-P230.....	13
5.1.1	Version Information.....	13
5.1.2	Anomalies.....	13
6	Document Revision History.....	14
A	List of Figures and Tables.....	15

© BECOM Systems GmbH 2019

All Rights Reserved.

The information herein is given to describe certain components and shall not be considered as a guarantee of characteristics.

Terms of delivery and rights of technical change reserved.

We hereby disclaim any warranties, including but not limited to warranties of non-infringement, regarding circuits, descriptions and charts stated herein.

BECOM Systems makes and you receive no warranties or conditions, express, implied, statutory or in any communication with you. BECOM Systems specifically disclaims any implied warranty of merchantability or fitness for a particular purpose.

BECOM Systems takes no liability for any damages and errors causing of the usage of this board. The user of this board is responsible by himself for the functionality of his application. He is allowed to use the board only if he has the qualification. More information is found in the General Terms and Conditions (AGB).

Information

For further information on technology, delivery terms and conditions and prices please contact BECOM Systems [www.becom-group.com](http://www.becom-group.com)



Warning

Due to technical requirements components may contain dangerous substances.

# 1 Unboxing

## 1.1 In the box

- Argos3D-P23x
- CAT5/7 Ethernet Cable
- Interface Breakout-Board
- Quick Start Guide
- Power Supply



### Note

The power supply's operating temperature is specified from 0 to +40°C. This represents not the effective working temperature of the Argos3D-P23x sensor!

## 1.2 Connecting your Argos3D-P23x

## 1.3 Connector Overview

The Argos3D-P23x uses one common connector for power and interfaces. For test purposes the KIT contains a breakout-board to have individual access to the interfaces of the Argos3D-P23x.

The break-outboard has three main interfaces:

- a. Power Connector
- b. Ethernet
- c. Argos3D-P23x common connector

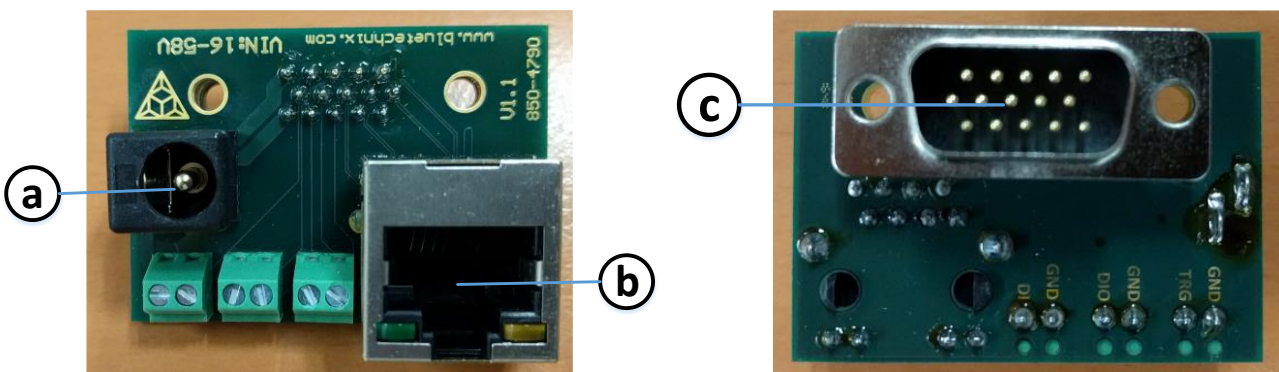


Figure 1-1: Argos3D-P23x break-out board front and rear view



**Note**

Please follow the next steps in the right order to get your 'Argos3D-P23x' up and running correctly.

### 1.3.1 Connecting the break-out board

Please connect the break-out board to the Argos3D-P23x common connector first.

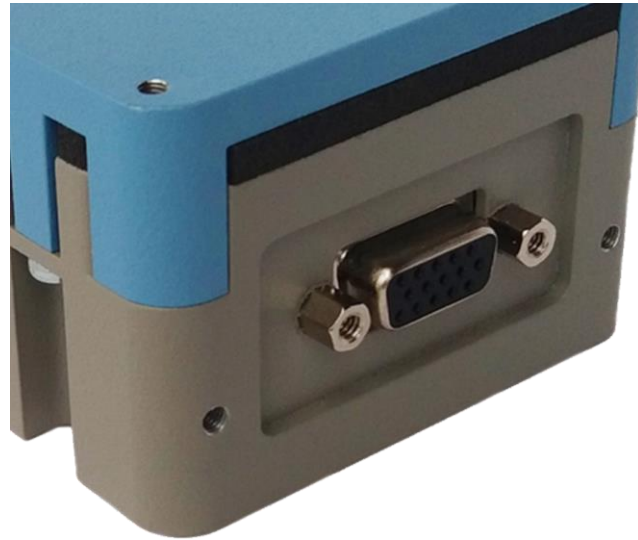


Figure 1-2: Argos3D-P23x common connector

### 1.3.2 Connecting the power supply

To ensure, that your Argos3D-P23x works correctly, connect the 'Argos3D' to a **12-30V DC** power supply using connector **(a)** and wait for approximately 20 seconds until the camera boots up.

**Pin assignment on the power connector (a): Pin #1: +12V to +30V, Pin#2: GND**



**Note**

The power supply connector is protected against wrong polarity but the 'Argos3D' will not work in case you don't use the correct polarity! If the Argos3D-P23x doesn't work please check the power supply polarity first!

### 1.3.3 Connecting the Ethernet Cable

Plug in the Ethernet cable **(b)** and connect your Argos3D-P23x to your PC. ^

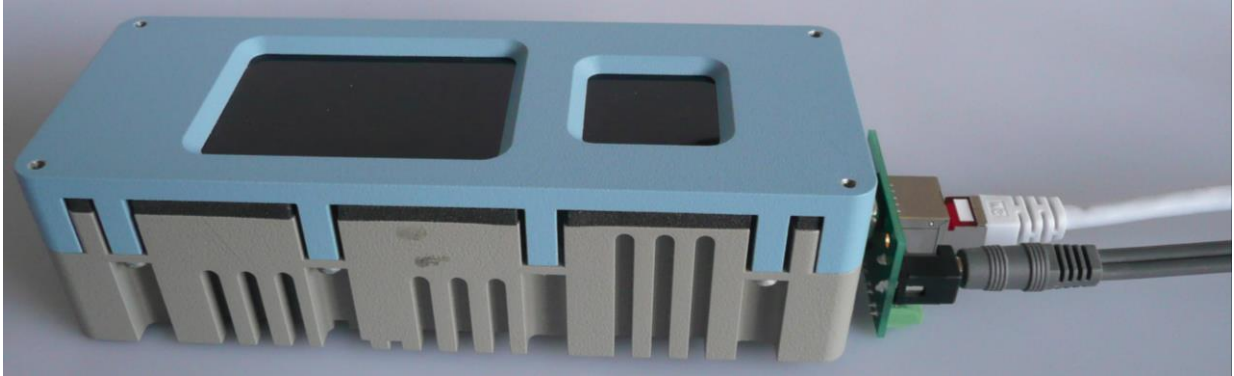


Figure 1-3: Argos3D-P23x connected to power and Ethernet

## 2 Downloading the Evaluation Software

Please log in to our support website at <https://support.bluetechnix.com/> and download the Argos-P23x customer software package. This package also includes the Bluetechnix ToF-Suite.

### 2.1 Support website

Select ,free access'

#### Support, Documentation & Software Download



Figure 2-1: Download Evaluation Package



## 2.2 Start-up screen

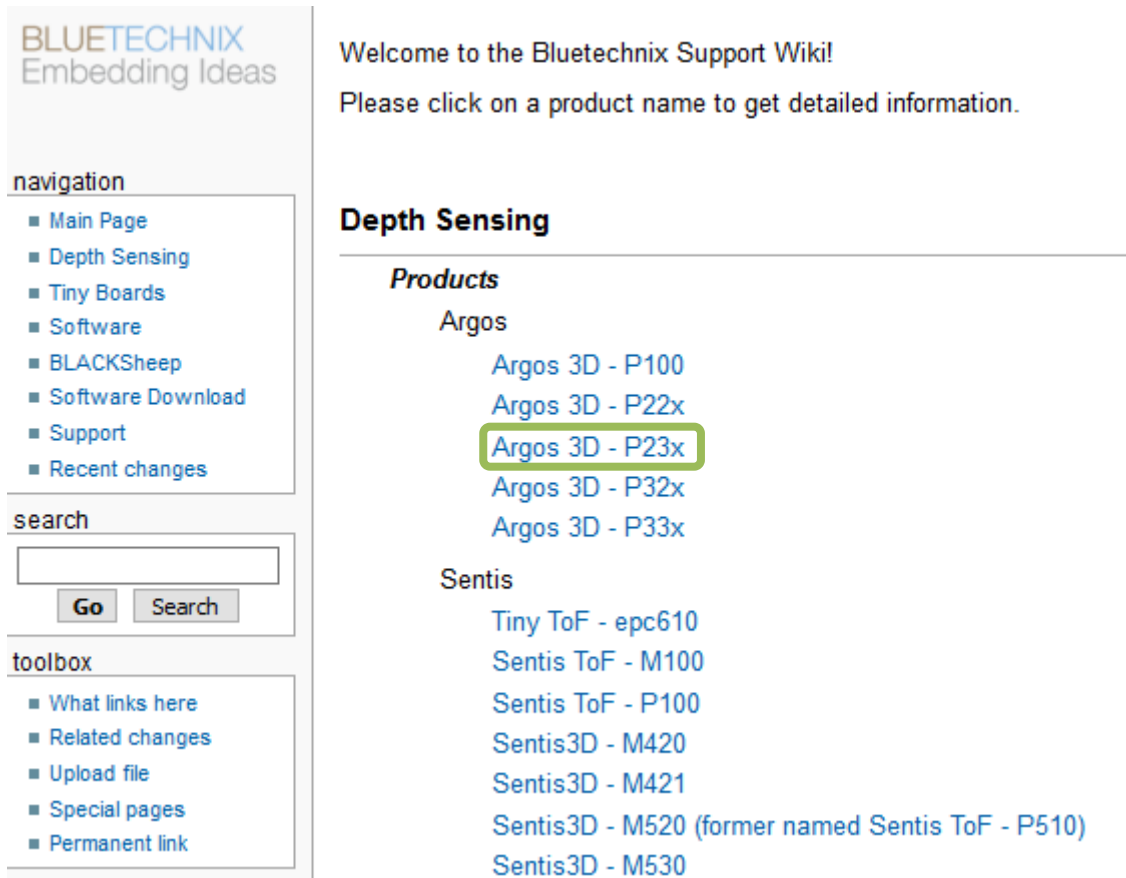


Figure 2-2: Start-up screen

Please select your product Argos3D-P23x.

Please follow the instructions on the website.

## 2.3 Prepare your Network Interface Card (NIC)

Once you have connected your Argos3D-P23x to a Network Interface Card (NIC) of your PC give this NIC the IP-Address 192.168.0.1 with a subnet mask of 255.255.255.0.

No driver must be installed on your PC!

The Argos3D-P23x uses IP-Address 192.168.0.10 with subnet mask 255.255.255.0.

### **3 Start using your Argos3D–P23x with ‘BltTofSuite’**

Browse to the directory where you previously saved the BltTofSuite software zip file. Unzip the software.

Using this software, you can simply display the depth image and the amplitude image of the Argos3D–P23x. For a detailed introduction to the software, please read the ‘ToF Suite - Quick Start Guide’

Place the Argos3D–P23x on your desk approximately 50 cm in front of you.

Go to the directory where you unzipped the software and start the “*BltTofSuite.exe*”. On how to use the ToF Suite, please refer to the user manual included in the software support package.

## 4 System Requirements & Support

An Argos3D-P23x enabled application is required in order to use this 'Argos3D' device.

Connect to a system with:

- Operating System: Microsoft Windows 7/8/10/Vista
- 32 bit (x68) or 64 bit (x64) processor
- Dual-core 2 GHz or faster CPU
- Dedicated Ethernet port
- 2GByte RAM

### 4.1 Support

For answers to common questions, troubleshooting steps and further documentation visit our Bluetechnix support website or using the direct link: [https://support.bluetechnix.com/wiki/Argos\\_3D-P23x](https://support.bluetechnix.com/wiki/Argos_3D-P23x)

## 5 Product History

### 5.1 Argos3D-P230

#### 5.1.1 Version Information

Version	Type	Release date
V1.0.0	X-Grade	January 2019

Table 5.1: Overview Argos3D-P230 product changes

Additional information can be found at <http://support.bluetechnix.com>

#### 5.1.2 Anomalies

Version	Date	Description
1.0.0	11.01.2019	- Modulationfrequencies >40MHz are not working correctly. - Firmware update not working as intended. Workaround available.

Table 5.2: Product anomalies

Additional information can be found at <http://support.bluetechnix.com>

## 6 Document Revision History

Version	Date	Document Revision
1	11.01.2019	First draft
2	29.01.2019	New layout, updated pictures

## A List of Figures and Tables

### Figures

Figure 1-1: Argos3D–P23x break-out board front and rear view .....	5
Figure 1-2: Argos3D–P23x common connector .....	6
Figure 1-3: Argos3D–P23x connected to power and Ethernet .....	7
Figure 2-1: Download Evaluation Package .....	8
Figure 2-2: Start-up screen .....	9

### Tables

Table 5.1: Overview Argos3D–P230 product changes .....	13
Table 5.2: Product anomalies .....	13
Table 6-1: Revision history .....	<b>Error! Bookmark not defined.</b>