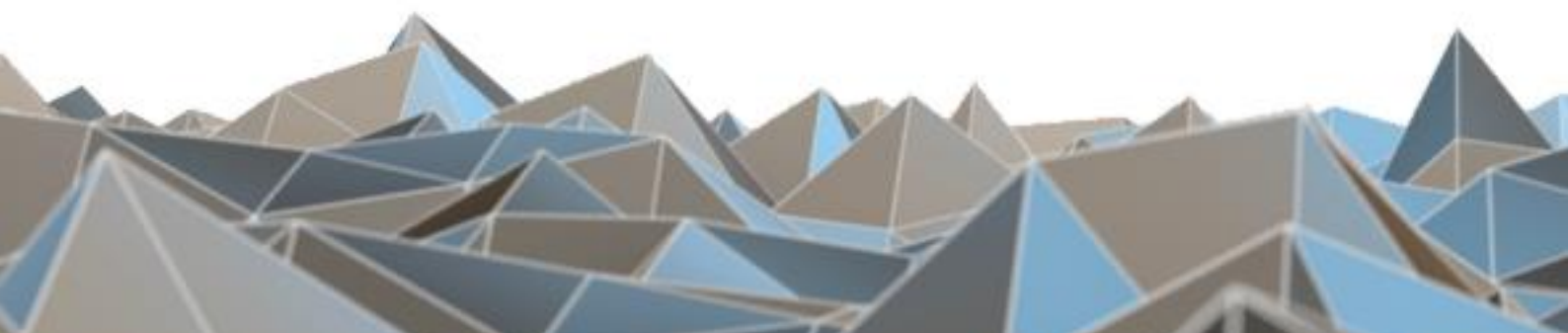


BLUETECHNIX
Embedding Ideas

Argos 3D - P320

Quick Start Guide

Version 1





Bluetechnix

Waidhausenstraße 3/19
A-1140 Vienna
AUSTRIA

office@bluetechnix.com
www.bluetechnix.com

Argos3D-P320 – Quick Start Guide

Document No.: 900-308 / A

Publication date: October 12, 2015

Subject to change without notice. Errors excepted.

This document is protected by copyright. All rights reserved. No part of this document may be reproduced or transmitted for any purpose in any form or by any means, electronically or mechanically, without expressly written permission by Bluetechnix GmbH.

Windows is a registered trademark of Microsoft.



Table of Contents

1	Unboxing	5
1.1	In the box	5
1.2	Opening your Argos3D–P320	5
1.3	Connecting your Argos3D–P320	6
1.4	Connector Overview	6
1.4.1	Connecting the power supply	7
1.4.2	Connecting the Ethernet Cable	7
2	Downloading the Evaluation Software	8
2.1	Support website	8
2.2	Start-up screen	9
2.3	Prepare your Network Interface Card (NIC)	10
3	Start using your Argos3D–P320 with ‘BltTofSuite’	11
4	System Requirements & Support.....	13
4.1	Bluetechnix ToF Suite	13
4.2	Support	13
5	Product History	14
5.1	Version Information	14
5.1.1	Argos3D–P320	14
5.2	Anomalies.....	14
5.3	Document Revision History	14
6	Index.....	15



© Bluetechnix 2015

All Rights Reserved.

The information herein is given to describe certain components and shall not be considered as a guarantee of characteristics.

Terms of delivery and rights of technical change reserved.

We hereby disclaim any warranties, including but not limited to warranties of non-infringement, regarding circuits, descriptions and charts stated herein.

Bluetechnix makes and you receive no warranties or conditions, express, implied, statutory or in any communication with you. Bluetechnix specifically disclaims any implied warranty of merchantability or fitness for a particular purpose.

Bluetechnix takes no liability for any damages and errors causing of the usage of this board. The user of this board is responsible by himself for the functionality of his application. He is allowed to use the board only if he has the qualification. More information is found in the General Terms and Conditions (AGB).

Information

For further information on technology, delivery terms and conditions and prices please contact Bluetechnix (<http://www.bluetechnix.com>).

Warning

Due to technical requirements components may contain dangerous substances.



1 Unboxing

1.1 In the box

- Argos3D–P320
- CAT5/7 Ethernet Cable
- Quick Start Guide
- Power Supply *



*** Note**

The power supply's operating temperature is specified from 0 to +40°C. This represents not the effective working temperature of the Argos3D–P320 sensor!

1.2 Opening your Argos3D–P320

To access the connector compartment unscrew the two screws on the Argos3D-P320 front and take off the connector compartment lid.

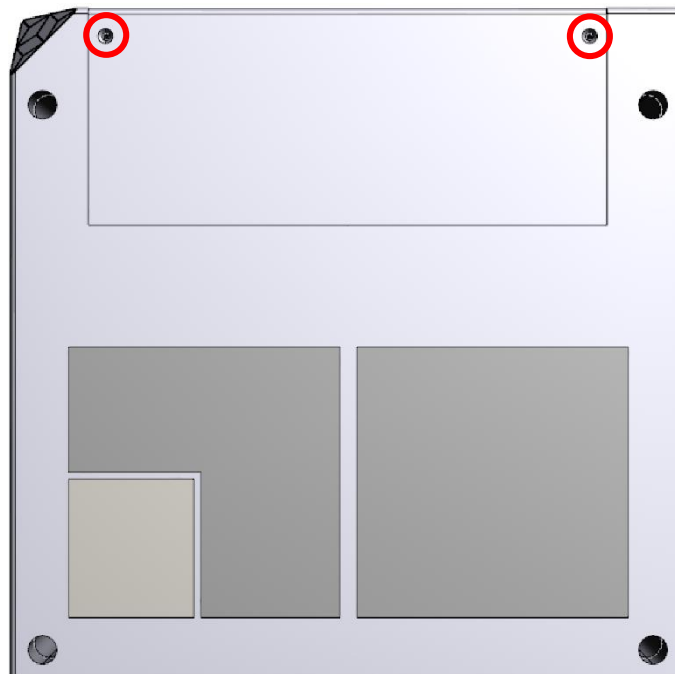


Figure 1-1: Argos3D–P320 connector compartment screw positions



1.3 Connecting your Argos3D-P320

1.4 Connector Overview

- | | |
|---------------------------------|------------------|
| a. Power Connector | g. RS232 / RS485 |
| b. Ethernet | h. DIP-Switch |
| c. General purpose input 1 & 2 | i. Reset-Button |
| d. General purpose output 1 & 2 | j. Debug-UART |
| e. Modulation Light Interface | k. Status LED |
| f. Trigger | |

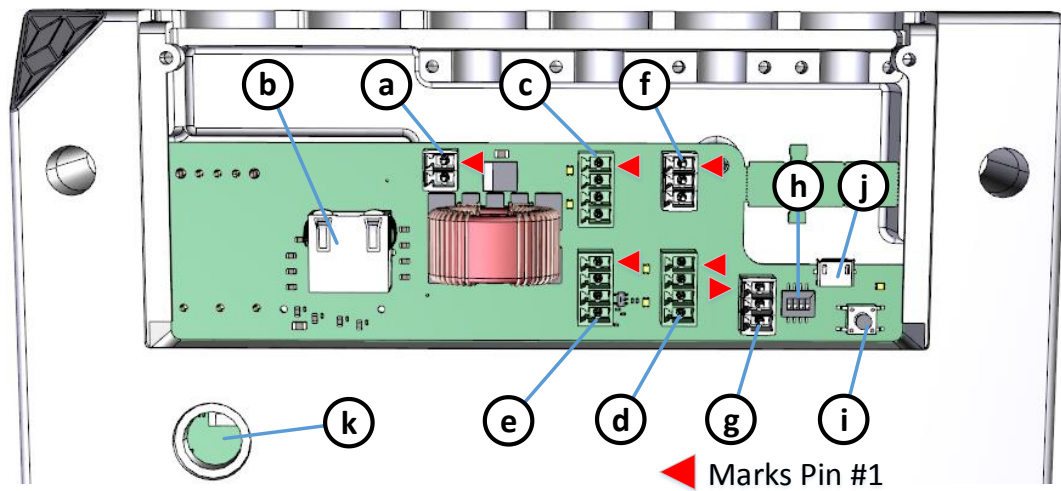


Figure 1-2: Argos3D-P320 connectors and interfaces

! **Note**
Please follow the next steps in the right order to get your 'Argos3D-P320' up and running correctly.

1.4.1 Connecting the power supply

To ensure, that your Argos3D–P320 works correctly, connect the ‘Argos3D’ to a **12-30V DC** power supply using connector **(a)** and wait for approximately 20 seconds until the camera boots up.

Pin assignment on the power connector (a): Pin #1: +12V to +30V, Pin#2: GND

! **Note**
The power supply connector is protected against wrong polarity but the ‘Argos3D’ will not work in case you don’t use the correct polarity! If the Argos3D–P320 doesn’t work please check the power supply polarity first!

1.4.2 Connecting the Ethernet Cable

Plug in the Ethernet cable **(b)** and connect your Argos3D–P320 to your PC.

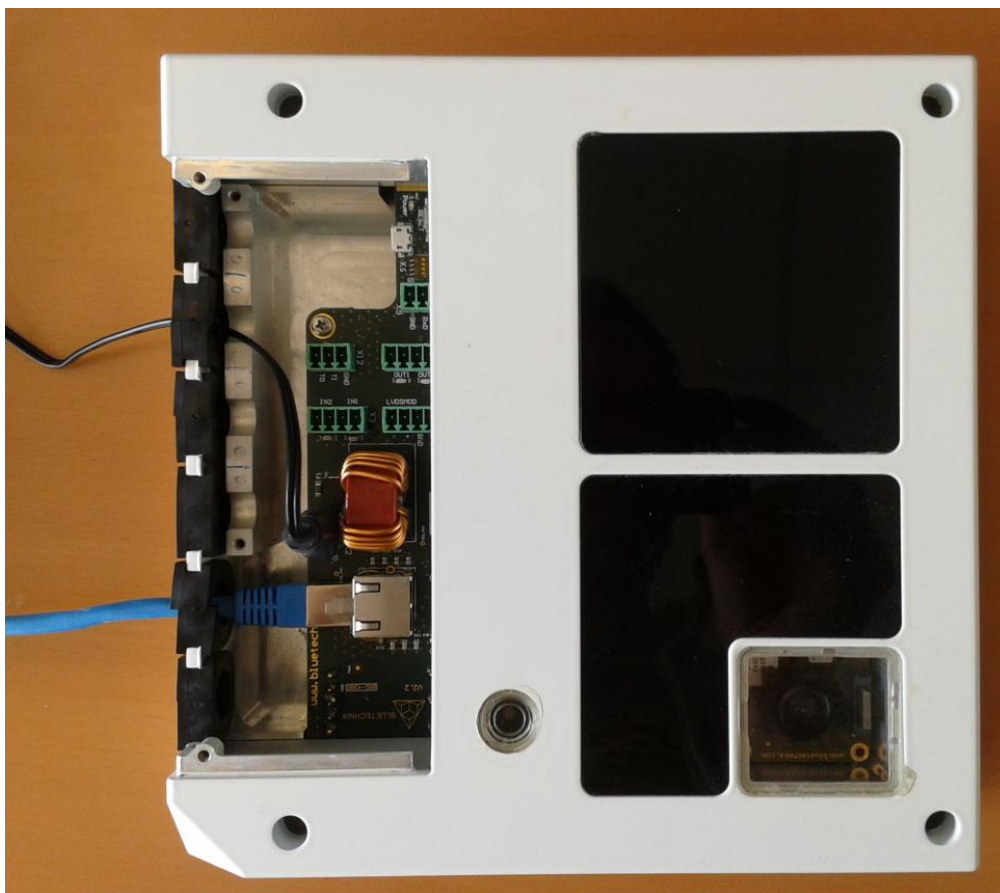


Figure 1-3: Argos3D–P320 with connected power supply and Ethernet cable



2 Downloading the Evaluation Software

Please log in to our support website at <https://support.bluetechnix.com/> and download the Argos-P320 customer software package. This package also includes the Bluetechnix ToF-Suite.

2.1 Support website

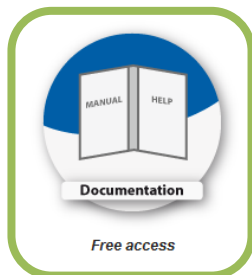
Select ,free access‘



Bluetechnix Support

Welcome to our support area. Please select from one of the items below.

Support & Documentation



Software Download Page



Figure 2-1: Download Evaluation Package



2.2 Start-up screen

Main Page

Welcome to the Bluetechnix Support Wiki!
Please click on a product name to get detailed information.

1 Depth Sensing

Products

Argos

- [Argos 3D - P100](#)
- [Argos 3D - P310](#)
- [Argos 3D - P320](#)

Sentis

- [Tiny ToF - epc610](#)
- [Sentis ToF - M100](#)
- [Sentis ToF - P100](#)
- [Sentis ToF - P510](#)
- [Sentis ToF - P509](#)

Flash

- [ToF-Flash](#)

Modules

ToF Modules (TIM)

- [TIM-UP-19k-S3-Spartan6](#)
- [TIM-UP-19k-S3-ETH](#)

Illumination Modules (LIM)

- [LIM-U-LED-850-x](#)

KITs

MTK Evaluation KITs

- [MTK USB Evaluation KIT for TIM-UP-19k-S3-Spartan6](#)
- [MTK ETH Evaluation KIT for TIM-UP-19k-S3-ETH](#)
- [Lens KITs](#)

Figure 2-2: Start-up screen

Please select your product: Argos 3D – P320

Please follow the instructions on the WEB-Site



2.3 Prepare your Network Interface Card (NIC)

Once you have connected your Argos3D–P320 to a Network Interface Card (NIC) of your PC give this NIC the IP-Address 192.168.0.1 with a subnet mask of 255.255.255.0.

No driver must be installed on your PC!

The Argos3D–P320 uses IP-Address 192.168.0.10 with subnet mask 255.255.255.0.



3 Start using your Argos3D–P320 with ‘BltTofSuite’

Browse to the directory where you previously saved the BltTofSuite software zip file. Unzip the software.

Using this software you can simply display the depth image and the amplitude image of the Argos3D–P320. For a detailed introduction to the software, please read the ‘Bluetechnix ToF Suite - Quick Start Guide’

Place the Argos3D–P320 on your desk approximately 50 cm in front of you.



Figure 3-1: Sample scenario with Argos3D–P320

Go to the directory where you unzipped the software and start the “*BltTofSuite.exe*”. Connect to the Argos3D–P320 using the network configuration listed in 2.3. After the connection is established, you should see something like the screenshot below.

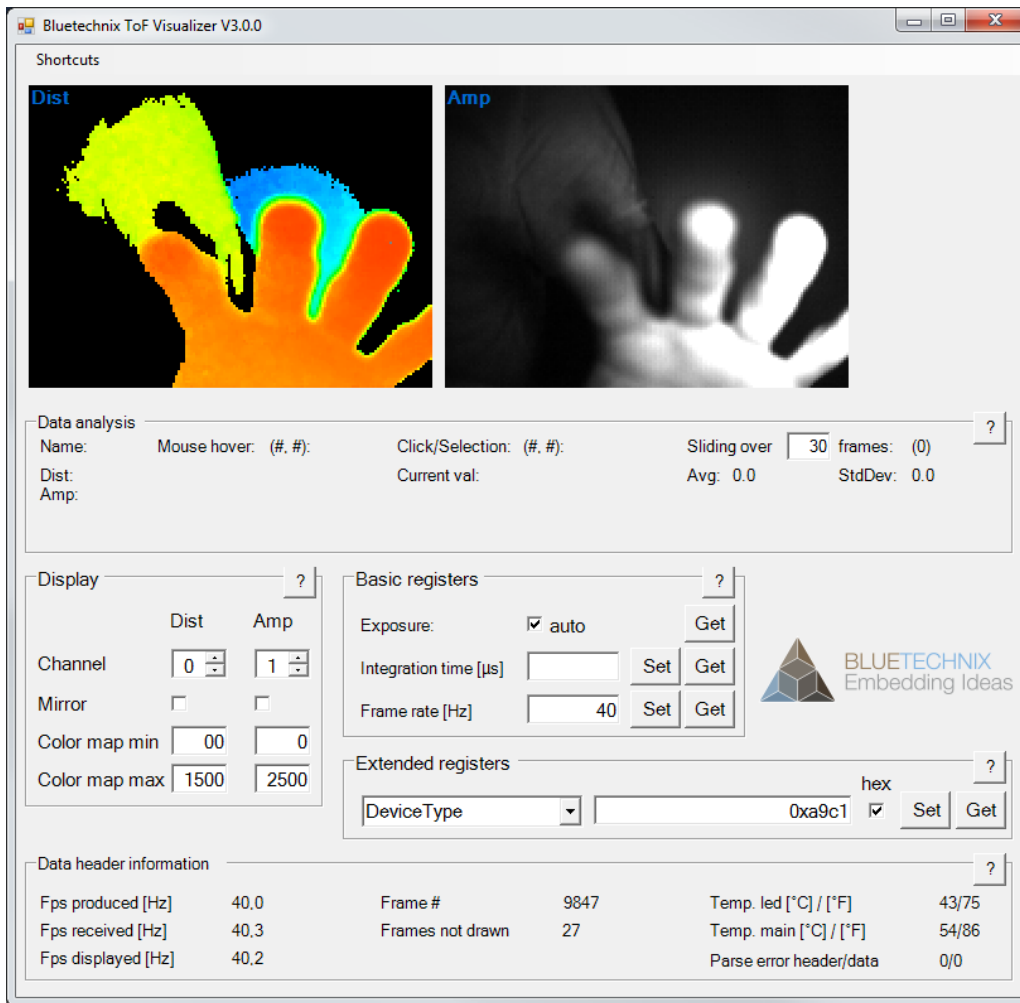


Figure 3-2: BitToFsuite screenshot



4 System Requirements & Support

An Argos3D–P320 enabled application is required in order to use this ‘Argos3D’ device.

Connect to a system with:

- Operating System: Microsoft Windows XP/7/Vista
- 32 bit (x68) or 64 bit (x64) processor
- Dual-core 2 GHz or faster CPU
- Dedicated Ethernet port
- 2GByte RAM

4.1 Bluetechnix ToF Suite

Visualizer is a .NET application and needs the **.NET framework 4.0** which is available from Microsoft for all actual Windows versions.

4.2 Support

For answers to common questions, troubleshooting steps and further documentation visit our Bluetechnix support website or using the direct link: https://support.bluetechnix.at/wiki/Argos_3D-P320



5 Product History

5.1 Version Information

5.1.1 Argos3D–P320

Version	Release date	Firmware Version
X-Grade	Sep 2015	V0.9.0

Table 5.1: Overview Argos3D–P320 product changes

Additional information can be found at <http://support.bluetechnix.com>

5.2 Anomalies

Version	Date	Description
0.0.0		No anomalies reported yet.

Table 5.2: Product anomalies

Additional information can be found at <http://support.bluetechnix.com>

5.3 Document Revision History

Version	Date	Document Revision
1	20151012	First draft

Table 5.3: Revision history



6 Index

A

Amplitude image	11
Anomalies	14

C

Connecting your Argos3D-P310	6
Contents Package	5

D

Depth image.....	11
------------------	----

E

Evaluation Package Downloading	8
---	---

O

Opening your Argos3D-P320	5
------------------------------------	---

P

Power Supply Connecting.....	7
Product History	14

S

System Requirements & Support	13
-------------------------------------	----

T

Troubleshooting	13
-----------------------	----