

# TIM-UP-19k-S3 Ethernet

ToF Depth Sensor Module

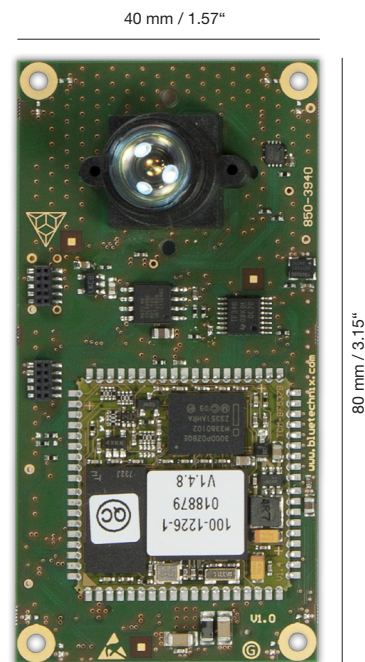


BLUETECHNIX  
Embedding Ideas

The time of flight based TIM is a very new type of combined depth sensor module: 3D point cloud and Ethernet streaming on a single board of only 40 x 80 mm.

The module is standard conform to the TIM interface standard and enables our customers to build their own Ethernet connected time of flight 3D depth sensor with only a few simple parts such as a lighting module e.g. LIM-U-LED-850 6 and a very basic interface board.

The TIM-UP-19k-S3 Ethernet is based on PMD' 19k-S3 Time of Flight IC. It has a standard field of view of 90° and provides a 3D point cloud data via Ethernet. For this product there is a variety of lenses available (30, 60 or 120°). Technical details on backside.

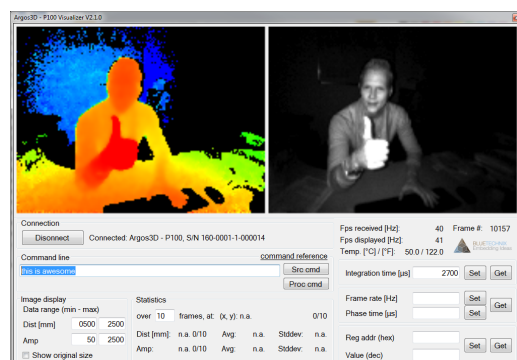


*Smart, Small & low-priced*

## Highlights

- » Resolution of 160 x 120 pixel
- » Field of View of 30 / 60 / 90 / 120 °
- » Standardized connector - TIM
- » 40 x 80 mm / 1.57" x 3,15"
- » DSP & Ethernet on-board

**pmd**  
intelligence



Sample ToF distance and grayscale information

# TIM-UP-19k-S3

## Ethernet

ToF Depth Sensor Module



BLUETECHNIX  
Embedding Ideas

### Feature Overview

Dimensions	40 x 80 mm / 1.57" x 3,15"
ToF IC	PMD 19k-S3
Pixel	160 x 120
Field of View	30 / 60 / 90 / 120 °
Output	3D Depth Data, Point Cloud
FPS	up to 25
Interfaces	1 x Ethernet 10/100 Mbit 1 x SPI 3 x GPIO
Lens Types	M12 or CS
Power Supply	5 V <sub>DC</sub>
Temperature Range	-20 to +60 °C

### Applications



- » **Automation and Control**
  - » Range Measurements
  - » Goods Counting



- » **Robotics**
  - » 3D Safety Area
  - » Map Building
  - » Navigation
  - » Obstacle detection



- » **Gesture Recognition**
  - » Touch less Control
  - » Gaming Industry
  - » HMI for Industrial Robots
- » **Building Automation**
  - » Security Appliances
  - » People Counting
  - » Safety Access Control

### Customization

The depth sensor module concept is focused on modularity. Individual base boards with your required interfaces can easily be implemented.

Bluetechnix as one of the leading ToF experts ensures with this unique ToF module a new and very efficient way to build up customized depth sensing systems rapidly.

### Ordering Information

Order No.	Info
150-2206-1	TIM-UP-19k-S3 Ethernet ToF Image Sensor Module

Bluetechnix Group GmbH  
Waidhausenstraße 3/19 | 1140 Wien, Austria  
P +43 (1) 914 20 91 x 0 | F +43 (1) 914 20 91 x 99  
[www.bluetechnix.com](http://www.bluetechnix.com) | [office@bluetechnix.com](mailto:office@bluetechnix.com)